

Plan of Action
For Rural Development
Schemes
and
Programmes
(Himachal Pradesh)

Priorities for 2018-19



Poverty Reduction: H.P. Snapshot

- Number of BPL Families: 2,82,370
- Per Capita Income: Rs. 1,58,462
- Rich and Poor Gap is not very wide and power distance is low.
- High literacy and education levels.
- Highly aware and participatory population.
- No original resident of the state begs or is homeless.
- Basic needs are met universally.



Poverty Reduction: Challenges

- Absence of desired jobs near homes in rural areas.
- Typical RD schemes don't match aspirations of the youth.
- Absence of micro enterprises to reduce poverty.
- Lack of entrepreneurial skills.
- Disinterest in farming and farm related occupations coupled with lack of drive to migrate out of state; attraction for government jobs and skill gap.



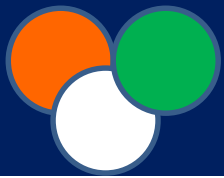
Poverty Reduction: Strategy

- Correction of health of the BPL List.
- Shift from vertical scheme based approach to **Livelihood Centric Approach.**
- Thrust on
 - Targeting interventions to pull people out of poverty
 - Identification of Skill Gaps in working population
 - Micro-enterprises in area/cluster approach
 - Integrated implementation of focused interventions
- Shift to Zero Budget Farming.
- Performance based Ranking/Grading and rewards to the Districts/Blocks/GPs .



Poverty Reduction: GoI Issues

- Each State is different. At present there is premium to stay poor. We must incentivize states financially through Project Based Funds on the basis of pre-decided indicators showing reduction in poverty.
- We need to have a component of VGF/Project Based Grant/Outcome Based Incentives in schemes such as Mission Antyodaya, SAGY and Aspirational Districts.
- Untied funds for better performers.



Key Priorities under MGNREGA

- Implementation of Good Governance initiatives.
- Prioritizing NRM works.
- Creation of durable Assets through convergence.
- Focus on Livelihood interventions.
- Completion of spill over works up to 31st March 2017.
- 100% Geo-tagging.
- 100 % timely payment.
- Issue of wage difference.



MGNREGA

Key Indicator	%age
eFMS Universalization	100
Implementation of 7 Registers.	100
Fund Utilization	99
Aadhaar seeding	98
Job Card Verification	98
Due Paid delay compensation	96
Bank Account of MGNREGA Workers	96
Asset-ID Generated of total completed works	95
Timely Payments	93
Geo Tagging	82
Expenditure on Agriculture & Allied Works	74
NRM Expenditure	70
Women Person Days out of Total	62



Physical & Financial target under MGNREGA

- **Approved Labour Budget [In Lakhs]**
(FY 2017-18) 250
 - Person Days Generated so far [In Lakhs] 192.83
 - % of Total LB 77.13
- **Total budget allocated (In lakh)**
(Centre + State share) =
 $58333.26 + 2370.71 = 60744.59$
- **Financial Performance (In Lakhs)**
 - Percentage of Utilization 99



SLWM Plan of Action

- Statewide successful cleanliness drive focused on following outcomes:
 - Village Level SWLM Plan
 - Assessment of quantum of waste
 - Segregation of waste at source.
 - Proper disposal of waste
- Cluster based approach to handle waste. Setting up of 10 Waste Treatment Plants in peri-urban areas in collaboration with State Pollution Control Board on pilot basis.



SLWM: Challenges

- Assessment of quantum of waste.
- Segregation of waste at source.
- Disposal of Waste.



Focus Areas on SLWM

Liquid Waste

- Soak Pits and Treatment Chambers at Household and Community level.
- Improvement of drainage.

Personal and Menstrual Hygiene

- Trainings and awareness
- Convergence with Health, ICDS and Education Departments



SAANSAD ADARSH GRAM YOJANA

- Review of Village Development Plans (VDPs).
- Gap Analysis and interventions to meet the gaps .
- Preparation of VDP for the Financial Year 2018-19 by 31st March, 2018 .
- Targeted and time bound execution and completion of works.
- Regular Performance Review.



SAANSAD ADARSH GRAM YOJANA

Proposed Plan for one SAGY GP SAGY village: Manali, Kullu

Sector	Name of the Departments	No. of schemes
Economic Development	Industries, RD, Agriculture, Horticulture & PR Deptt.	32
Ecology & Environment Development	Agriculture, PRD, RDD, MC, Forest, Planning , Horticulture	18
Basic Amenities	Irrigation & Public Health . Electricity, Planning, Public Work Department , H&FW, Education, RDD	45
Infrastructure	RDD,PWD, Irrigation & Public Health , Revenue & Forest, Education, Animal Husbandry	22
Governance	Home	
Total proposed works		117



National Ru-Urban Mission

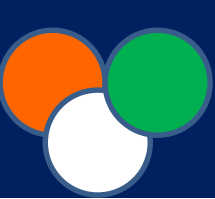
Cluster	Convergence Fund (Rs. In Cr)	CGF (Rs. In Cr)	Focus Area
Hinner, Solan District (Phase I)	45.63	15.00	Horticulture and clean and green environment
Sangla Cluster, Kinnaur District (Phase -I)	44.65	15.00	Agri Services and Tourism
Aut Cluster, Mandi District (Phase -I)	35.60	15.06	Farm, Agri Services and Adventure Tourism
Sihunta clusters , district Chamba (Phase-II)	35.00	15.04	Roads and Handicrafts
Ghannahatti clusters, district Shimla(Phase-II)	48.30	15.06	Agri services , health and social infrastructure
Moorang clusters, district Kinnaur (Phase-II)	35.60	15.0	Tourism



PRADHAN MANTRI AWAAS YOJANA (GRAMIN)

Three top most key priorities under PMAY (G) in Himachal Pradesh

- To sanction all remaining 250 houses of 2016-17 and 1282 houses of 2017-18 by 31st March, 2018.
- To complete all the 4874 houses of 2016-17 by 31st March, 2018.
- To complete all 2511 houses of 2017-18 by 30th September, 2018.
- Physical target for 2016-17 was for construction of 4874 houses and for 2017-18 for 2511 houses.



Proposal for enhancing bank linkage for Women SHGs (NRLM) for 2018-19

- 2900 old SHGs and 1100 new SHGs will be linked with banks for credit.
- SHGs will be motivated to avail enhanced doses of credit to setup micro enterprises.
- Training to SHGs to prepare simplified MCPs .
- Training to bank managers in Intensive Blocks.
- Linkage of SHGs members with PMJJY , PMJSY & APY.
- 5 Bank Sakhis will be trained in existing 12 intensive blocks on pilot basis .
- 60 CBRM committees will be formed and oriented.
- In 2017-18, 3251 SHGs have been linked with banks and an amount of Rs. 31.73 Cr. has been disbursed as credit against the target of Rs. 34.00 Cr. as on 05-03-2018.



Priorities under DAY-NRLM

- Staff will be recruited as per requirement.
- Focus will be on livelihood intervention

Sr. No.		
1	SHGs to be formed	4000
2	VOs to be formed	300
3	PRPs to be formed	60
4	ICRPs to be developed	400
5	Auditor to be developed	96
6	Bookkeeper to be developed	300
7	MCP Trainer to be developed	160
8	Active women	400



DDU-GKY

- Train 15000 youth with 70% assured placement.
- To reduce the attrition rate.
- 24 Mega Job Fairs will be conducted in 12 districts.
- 500 Job Fairs will be conducted at Panchayat Clusters.
- Opening of Migration Support Centers in Delhi and Chandigarh.
- Professionals will be hired at all levels as provided in the SoPs on need basis.
- At present 14 Centers are active with 39 batches. 40 additional centers will be opened.



Proposal plan for one organic cluster

- Shifting focus from organic farming to zero budget farming.
- State wide implementation in convergence with all related.
- State level conference on Zero Budget Farming proposed on 17th March, 2018 to be presided over by HE the Governor in presence of Hon'ble CM, Ministers and others.



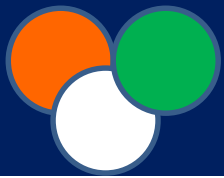
Mission Antyodaya Clusters

- 541 GPs identified under Mission Antyodaya.
- Gap identification process initiated.
- There is need to meet Viability Gaps in the identified clusters.



Key priorities for National Social Assistance Programme (NSAP)

- Pension scheme for all above 80 years of age
- Old age pension scheme
- Widow pension scheme
- Disabled pension scheme
- Assistance for construction of houses
- Priority to road connectivity , water & electricity connection to Vulnerable section of society .
- Heath facility under RSBY
- De addiction camps and rehabilitation centre for drug abussed.
- HP maintenance of parents and Dependent Act 2001

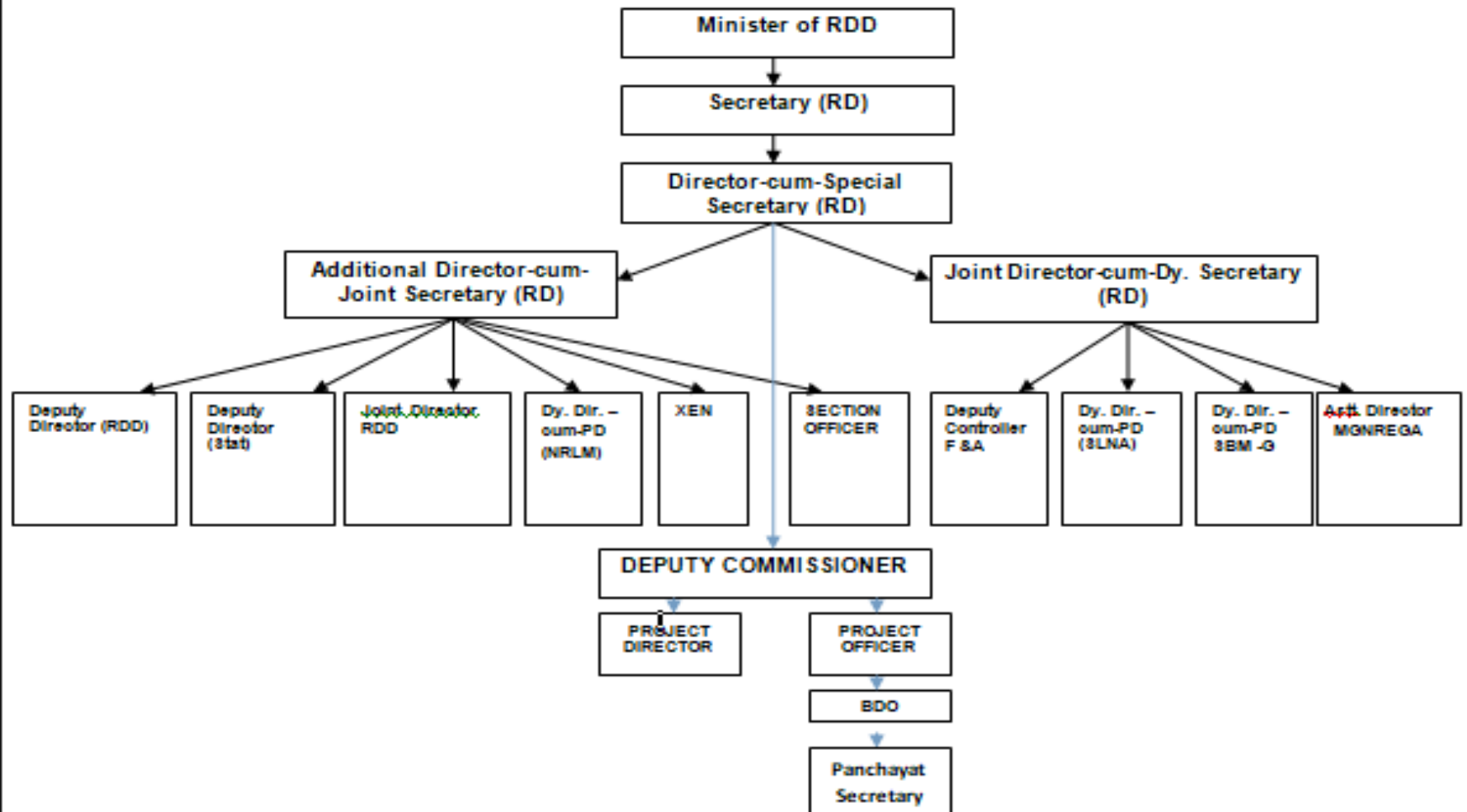


Convergence Framework

- Convergence strategy is being redrawn at the State and District Level with a focus on sustainable livelihoods.
- Consultation with stakeholder departments has been initiated, first state level meeting held on March 7, 2018.

Monitoring Arrangement

Organizational Structure of Rural Development





Thanks